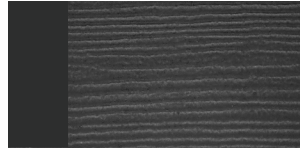
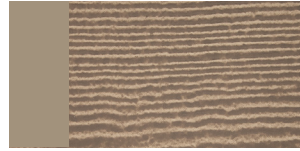


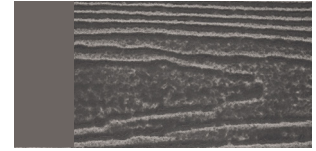
Aspen Ridge
Trim: Chocolate Aspen
Titebond: 44261
OSI: 271 / 257



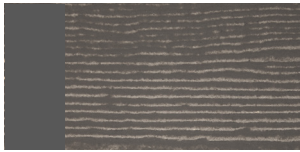
Black Canyon
Trim: Black
Titebond: 44031
OSI: 3



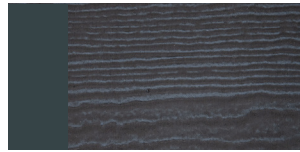
Caribou Trails
Trim: Buff
Titebond: 44251
OSI: 219



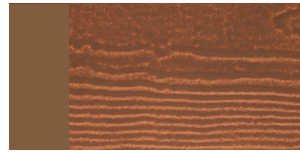
Cascade Slate
Trim: Pewter
Titebond: 45691
OSI: 545 / 209



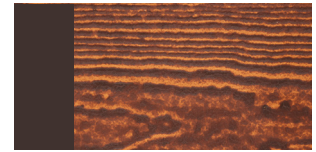
Coastal Gray
Trim: Deception Gray
Titebond: 45691
OSI: 565



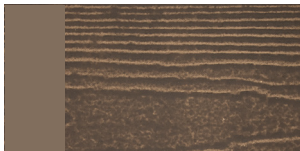
Midnight Tide
Trim: Blue Shadow
Titebond: 49611
OSI: 846



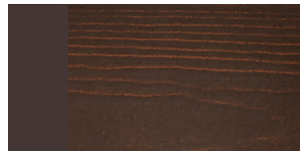
Mountain Cedar
Trim: Mountain Bark
Titebond: 44381
OSI: 252



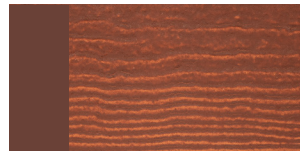
Old Cherry
Trim: Cordovan Brown
Titebond: 44381
OSI: 220



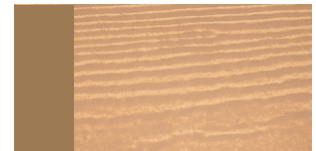
River Rock
Trim: Stone Gray
Titebond: 44261
OSI: 296



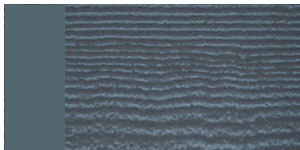
Roasted Walnut
Trim: Bark
Titebond: 44211
OSI: 289



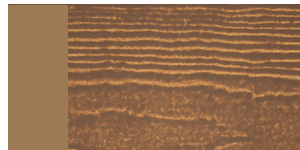
Rosewood
Trim: Sienna
Titebond: 45521
OSI: 947



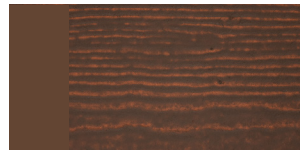
Sand Castle
Trim: Whole Wheat
Titebond: 46511
OSI: 475



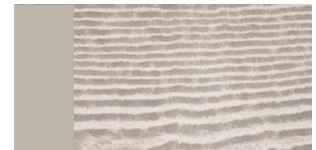
Stone Blue
Trim: Slate Tile
Titebond: 49571
OSI: 804



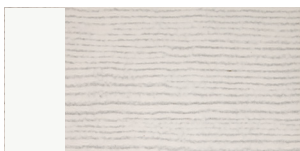
Summer Wheat
Trim: Whole Wheat
Titebond: 44421
OSI: 227



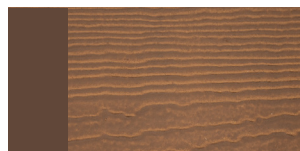
Warm Espresso
Trim: Chocolate
Titebond: 44211
OSI: 220



White Granite
Trim: Cinder
Titebond: 44601
OSI: 423 / 301



White Rapids
Trim: Chalk White
Titebond: 44021
OSI: 4



Winchester Brown
Trim: Bark Mulch
Titebond: 44421
OSI: 211

All suggested corresponding caulk and solid color trim can be purchased through local dealers or your local lumber yard.
Caulking must be latex-based and applied according to the manufacturer's instructions to maintain warranty.



Amber Dusk
Trim: Toasted Sand
Titebond: 44291
OSI: TBD



Beachwood Bay
Trim: Birch
Titebond: 46471
OSI: TBD



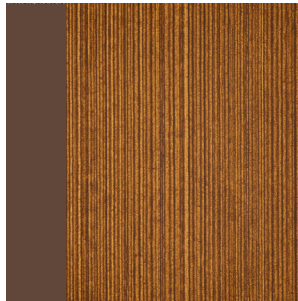
Chestnut Grove
Trim: Chocolate
Titebond: 44401
OSI: TBD



Cinder Falls
Trim: Black
Titebond: 44031
OSI: TBD



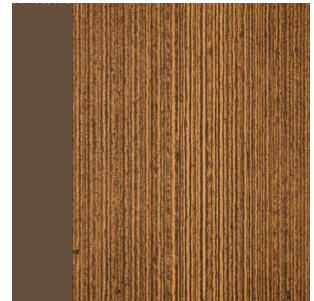
Prairie Bluff
Trim: Sandstone
Titebond: 46401
OSI: TBD



Sedona Sand
Trim: Bark Mulch
Titebond: 44381
OSI: TBD



Sunfire Back
Trim: Whole Wheat
Titebond: 44271
OSI: TBD



Trailhead Timber
Trim: Raw Clay
Titebond: 44501
OSI: TBD

All suggested corresponding caulk and solid color trim can be purchased through local dealers or your local lumber yard.

Caulking must be latex-based and applied according to the manufacturer's instructions to maintain warranty.

CORRESPONDING CAULKING PARTNERS



RECOMMENDED TRIM PARTNERS

