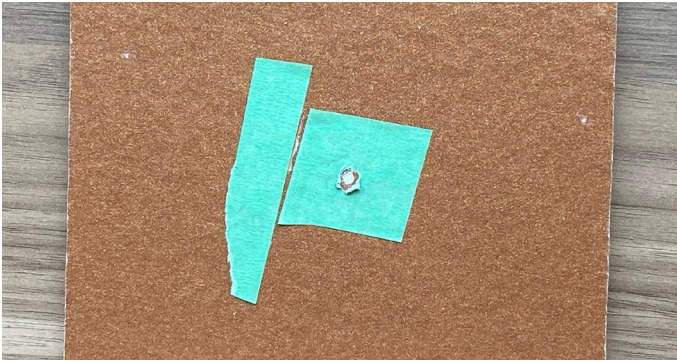
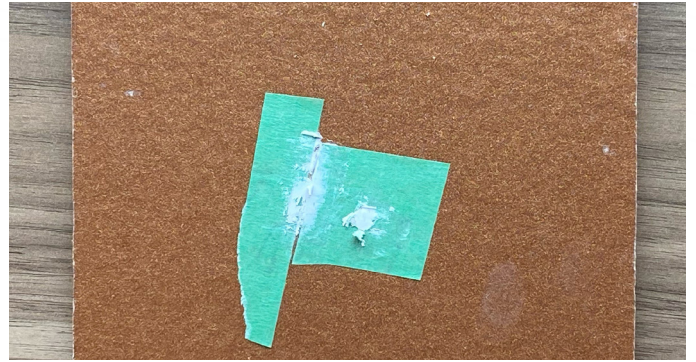


Touch-up on Woodtone Chrometallics™ in 5 Steps

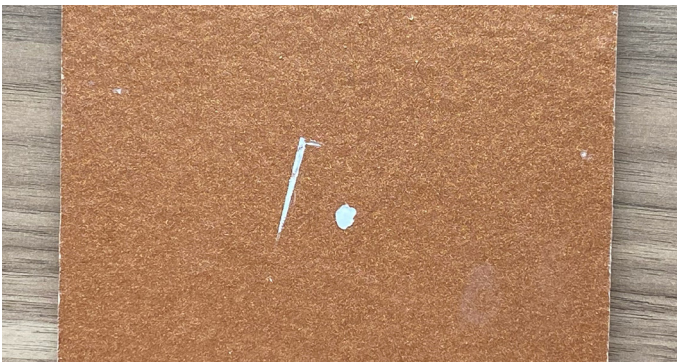
1. Use masking tape to protect the surrounding areas - leaving the scratch or gauge exposed.



2. Use a small amount of the provided epoxy filler on a plastic blade and force over the defects - filling completely and smoothing out edges.



3. Peel off the masking tape, and use a razor blade to gently shave off excess filler material until smooth.



4. Use the brush cap bottle of the base coat (shaking beforehand) and use a small amount of paint product to cover only the filled scratch/gauge.



5. Once the base coat is dry, take the metallic topcoat (shaking thoroughly first) and use the brush cap to lightly paint over areas covered with the base coat - feathering out edges and let dry. Two coats may be required to achieve desired look.



WOODTONE
inspired living, *inside and out*