

INSTALLATION INSTRUCTIONS

AbsolutePost™ by Woodtone

Effective: July 2019

GENERAL INFORMATION:

AbsolutePost™ products are designed for use in exterior applications where a textured or smooth structural, load bearing post is desired. AbsolutePost™ can also be used in railing system applications.

STORAGE:

- Place the first set of dunnage (wood blocks) on a level, dry surface. Material should be supported 4" above the ground to allow for free air movement and to prevent contact with ground moisture.
- Space dunnage a maximum of 6' apart. Stack directly above one another. Maximum storage height of 10' is recommended.
- All post ends are factory sealed to prevent water damage. Trimmed material will require end sealing with a latex or alkyd-oil primer.
- Material wrap is slippery when wet or frozen, to prevent injury do not allow workers to walk on bundles.
- Store all products wrapped in the original wrapping; do not re-wrap wet material.

PRIOR TO INSTALLATION:

- Consult and follow all applicable local building codes.
- AbsolutePost™ must be kept free from any source of moisture
- Check the material for profile, color, and quality prior to installation.
- Do not install any defective material. Installation constitutes acceptance of the delivered material. Product installed becomes the buyer's responsibility.
- To maintain the warranty, this product must be installed following these installation instructions.
- Failure to follow installation instructions will void this product's warranty.

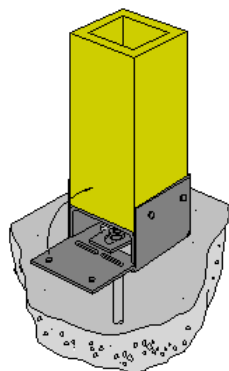
CUTTING:

Use a fine-tooth hand saw or power saw with a combination blade. The cutting action of the blade should be into the face of the material. Carbide-tipped blades are recommended. Seal all end cuts with an appropriate primer/paint. See Jobsite Success booklet for additional cutting and health/safety information. Notching of load bearing AbsolutePost™ is permitted only with prior approval from Woodtone.

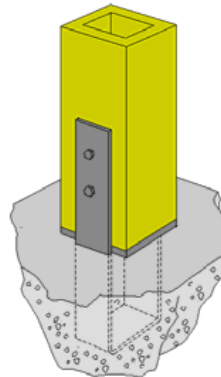
INSTALLATION

AbsolutePost™ is intended for axial loading only. Column bases and column caps are **required** when the column has been designed for use in an uplift application. Simpson Strong Tie products or equal are to be used during installation. Refer to hardware manufacturer's instructions for capacities and connector attachment.

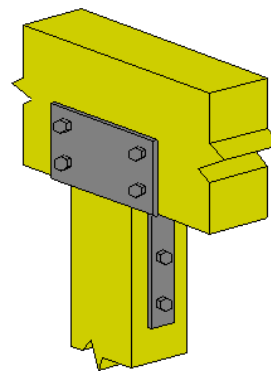
Raised Base Connection



Column Base Connection



Column Cap Connection



- NOTE: Simpson Strong-tie ABU/ABW connector Shown in example above. We recommend using connector products from one of these three companies: Simpson Strong-tie, USP Structural Connectors and Tamlyn.
- For vertical load only applications a nailed connection can be implemented. Toe-nail the column to the supporting structure as follows:
 - 4x4/6x6 Columns 1-8d x 2½” nail per column face for a total of 4 nails at bottom/4 nails at top.
 - 8x8 Columns 2-8d x 2½” nails per column face for a total of 8 nails at bottom and 8 nails at top.
- Where the column is in close contact with the foundation or soil, a column base is to be used to raise the column a minimum of 1” above the foundation or 6” above the soil.
- It is recommended that all connector holes be pre-drilled.
- Through-bolting is not permitted on structural connections on AbsolutePost™. Pilot holes are required for lag screws, and the Maximum permitted lag screw diameter is ½”.
- Nail and screw applications are subject to the specifications published in NDS 2005 for the applicable wood species used in AbsolutePost™, as referenced in the 2006 International Building Code.
- Notching of load bearing AbsolutePost™ is permitted only with prior approval from Woodtone™
- AbsolutePost™ is intended for use in dry service conditions. These are conditions where the equilibrium moisture content of the wood is less than 16%. AbsolutePost™ products used in exterior construction in protected or semi-protected locations such as under roof or porch canopies or overhangs, or in locations where it is wet for short period of time will typically have a equilibrium moisture content of not more than 16% and may be used.
- Hole sizes shall be limited to ¾” diameter for 6x6 and 8x8 posts.
- Holes shall be centered on the post and spaced vertically at least 8” apart for multiple holes. Holes in addition to those required for Installation of approved column caps and bases are not permitted within 8” of the top or bottom of the post.
- Trimming to length on site is permitted. The trimmed and non-trimmed ends shall be re-sealed prior to installation. Ensure all cuts are square and straight.
- It is the responsibility of the building designer, engineer and installer to ensure that all building codes and local jurisdiction requirements are met.
- Contact Woodtone™ for all other inquiries.

FACTORED LOAD TABLES

Eccentric Axial Allowable Loads for AbsolutePost™ @ 19% Equilibrium Moisture Content
 Unit of Measure: Pounds (lbs)
 US Certification: CCRR-1102 Code Compliance Research Report

| | 4x4” | 6x6” | 8x8” |
|-----|-----------|------------|------------|
| 10’ | 4,509 lbs | 22,490 lbs | 33,723 lbs |
| 12’ | 3,171 lbs | 17,116 lbs | 26,259 lbs |

FINISHING REQUIREMENTS:

AbsolutePost™ is manufactured from wood and is factory coated with our Hybrid Alkyd Emulsion primer and must be top coated with an exterior coating system in accordance with the following specifications to fulfill the warranty requirements. If the product purchased has primer only, we recommend 2 additional topcoats. If the product purchased has one topcoat applied, we recommend one additional coat of the same topcoat. If the product purchased was pre-finished with 2 coats, we recommend touch up with the supplied color-matched coating from Woodtone.

- Apply paint as soon as possible and within 60 days of installation.
- Follow the coating manufacture’s application and maintenance instructions
- Paint all exposed surfaces including drip edges.

GENERAL INFORMATION:

Paint performance is dependent upon the quality and quantity of paint applied, and the conditions under which it is applied. Low quality paint and/or thinly applied paint tend to last for a relatively short time, resulting in discoloration, premature fading, inadequate substrate protection, and frequent repainting – sometimes as often as every one or two years. Top quality paint, applied in sufficient quantity, will provide the best performance with the minimum maintenance. Follow coating manufacturer recommendations when selecting and applying a paint.

SURFACE PREPARATION:

The surface must be free of dust, dirt, mildew and other foreign materials before painting. Washing with water and a mild detergent will usually remove dust and dirt. Allow the surface to dry before painting.

PAINT SELECTION:

For best results, use satin/semi-gloss or full-gloss exterior acrylic latex or a satin/semi-gloss. Semi-gloss or full-gloss finishes tend to perform better than flat finishes. Note: Some systems may require the application of a designated primer and topcoat combination.

DO NOT USE THE FOLLOWING COATINGS:

Shake and shingle paints Vinyl acrylic paint*

Flat oil paint Vinyl acetate paint

Vinyl acetate / co-polymer paint Clear Coatings

Transparent or opaque stains

PAINT APPLICATION:

Always follow the manufacturer's recommendations for the application/maintenance of field-applied paints.

1. Prime and paint all field-cut edges of exterior trim using high quality exterior oil or acrylic latex primer formulated for wood, or a primer recommended by the paint manufacturer.
2. All exposed surfaces including the bottom edge must be well coated. Because of its location, the bottom edge is often not adequately protected with paint. Inadequate coverage of the bottom edge may result in paint failure or premature degradation of AbsolutePost™.
3. AbsolutePost™ must be finished with two coats of paint within 60 days after installation. If, due to unforeseen circumstances, the material is not painted within 60 days, re-prime the trim using an exterior primer that is specifically recommended for use on wood-based products and is compatible with the topcoat to be used. Use the same primer for repair of any damage to the original factory applied primer.
4. A total field-applied dry film thickness of at least 2-1/2 mils is required on AbsolutePost™ for the duration of the warranty period. This requires the application of two or more non-thinned coats of paint at the spread rate recommended by the paint manufacturer.
5. Most coatings can be applied with brush, roller, pad or spray. The brush application method tends to apply the most paint per coat; spraying tends to apply the least per coat.
6. The AbsolutePost™ surface temperature must not be less than 50 degrees for 24 hours following the application of water-based paint. Paint performance problems can be avoided by not applying paint in the evenings of cool spring and fall days when heavy dew can form before the surface of the paint has thoroughly dried. Allow at least 2 hours for the paint to dry before sunset. Likewise, painting in the morning should not begin until after the dew has had time to evaporate. Water absorption problems and major finish failure can occur with some latex paints when applied under these conditions.

Woodtone is not responsible for the performance of field applied finishes. Finish performance is dependent upon coating quality and application methods which are factors controlled by the finish manufacturer and the applicator.

If you require additional information, please contact Woodtone directly at 1-800-663-9844.